

FSX

CONCORDE
FLIGHT PACKAGE

ALZ657

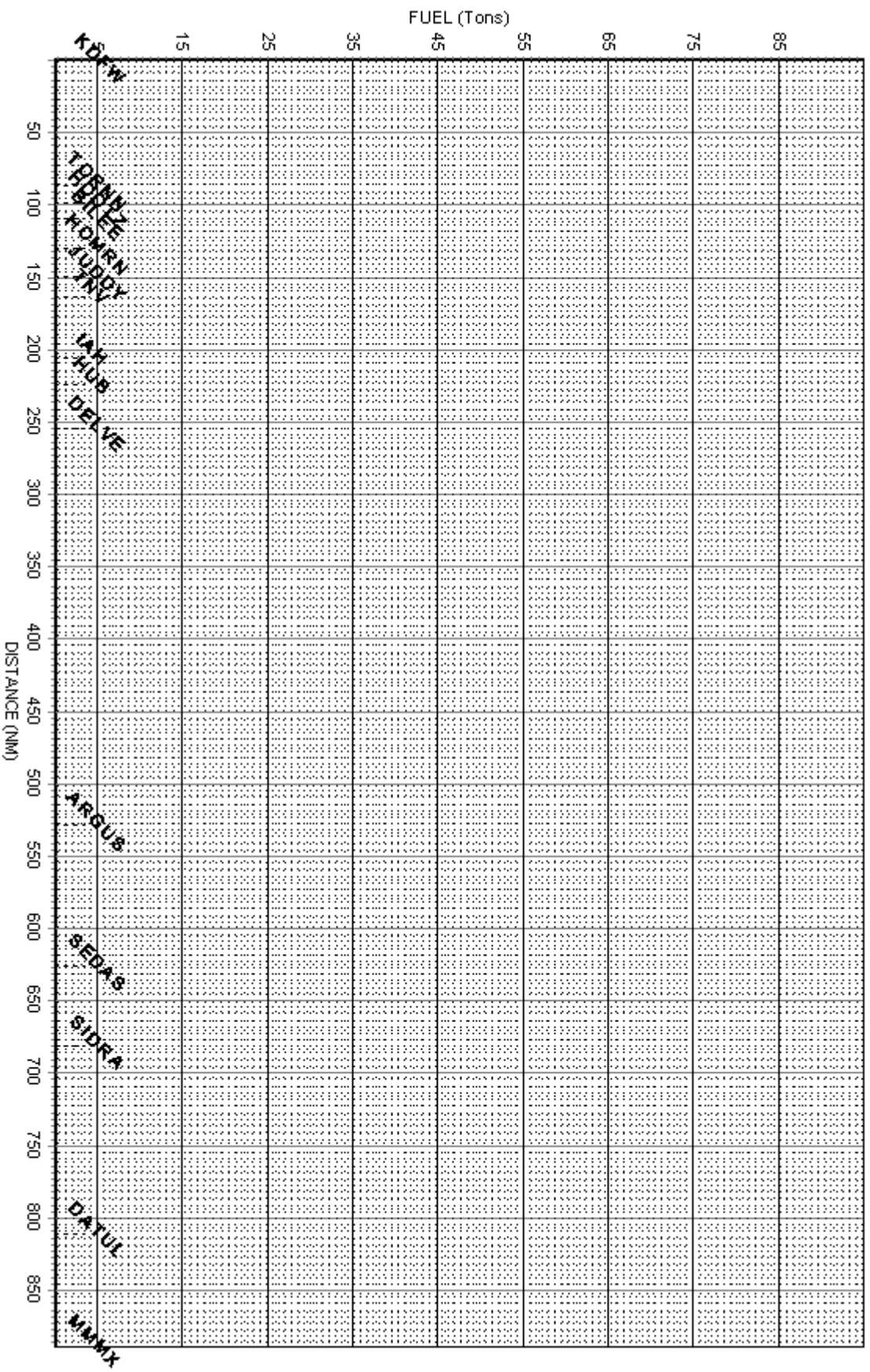
EC-202

KDFW - MMMX

04/01/2013



FUEL MANAGEMENT SHEET

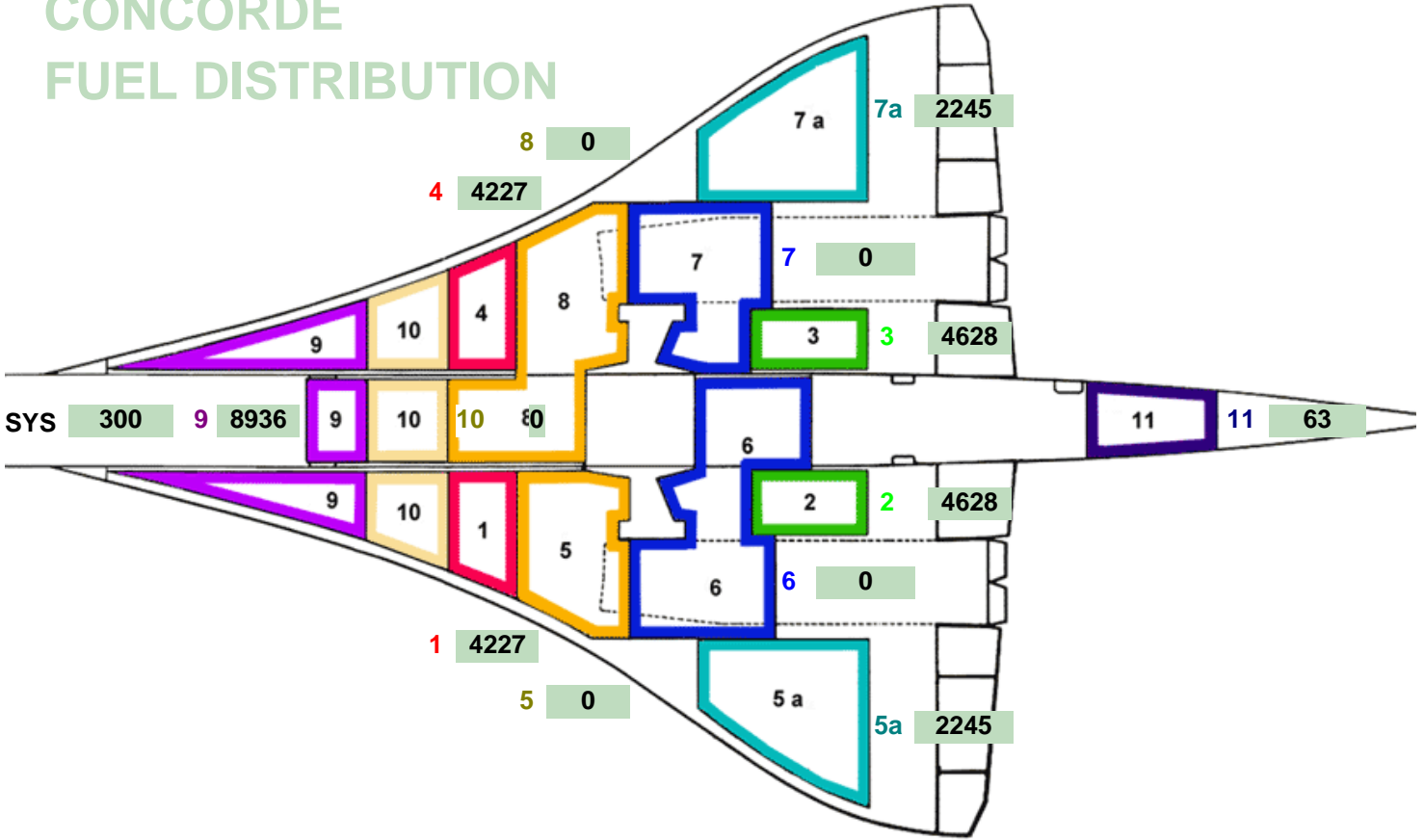


FUEL PLANNING

S-22.KDFWMMMXX

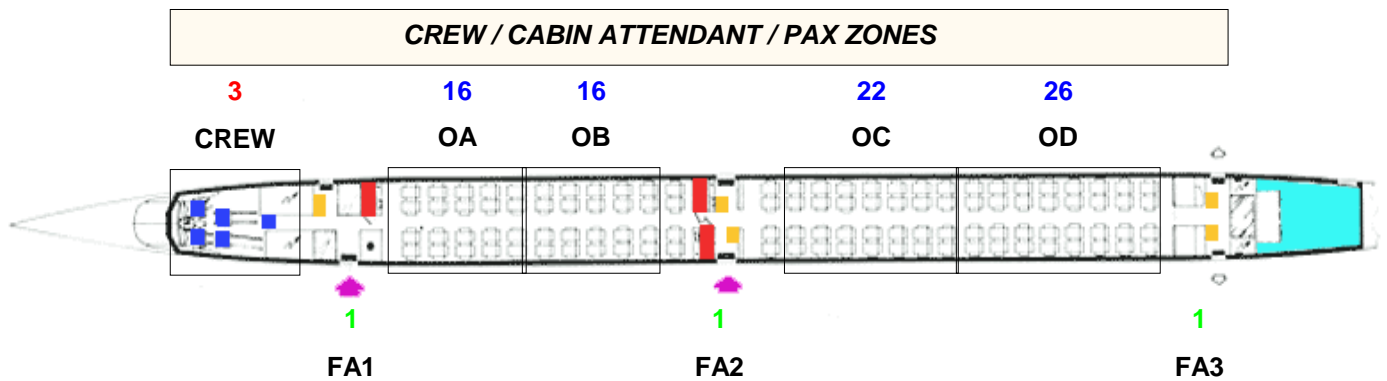
	Time	Fuel	Aircraft Weight
Corrected DOW			79210
Payload			7920
ZFW			87130
Holding	00:16	3190	
Alternate	00:09	3747	
Reserves		6937	
LANDING WEIGHT			94067
Trip Fuel (Supersonic)	01:13	16177	
Arrival Correction	00:07	663	
Departure Correction	00:27	1771	
Initial Climb Correction		N/A TOW < 150 T	
Corrected Trip Fuel	01:47	18612	
Contingency		931	
Extra Fuel		4000	
TAKE OFF WEIGHT			117610
Taxi Fuel		1000	
BLOCK WEIGHT			118610
RELEASE FUEL		31480	

CONCORDE FUEL DISTRIBUTION

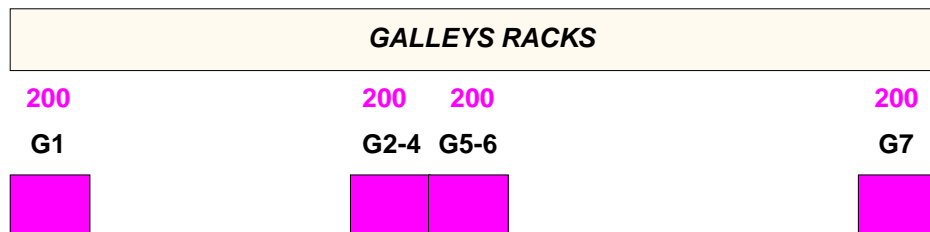


CONCORDE

Cabin Accommodation



	INDEX	WEIGHT	BAGAGES / FRET ZONES		
BASIC :	31.6	77840			
CORRECTION :	-6.3	1370	310	182	708
CORRECTED :	25.3	79210	CPT1	CPT2	CPT6
PAYLOAD :		7920			
BALLAST FUEL :		0			
ZFW :		87130	Dry ZFW CG : 52.37		

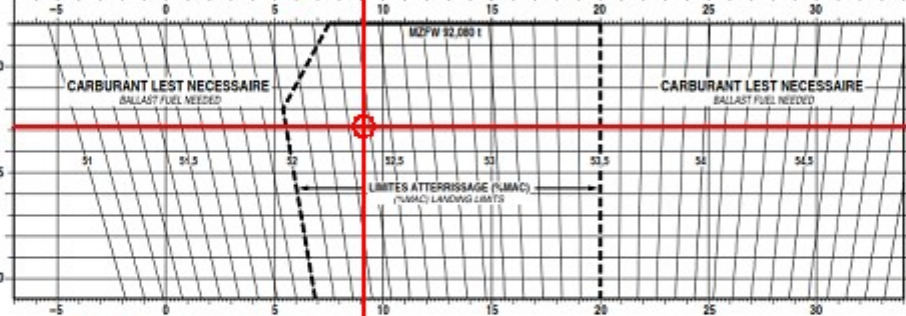


Concorde FEUILLE de CENTRAGE (BALANCE CHART)

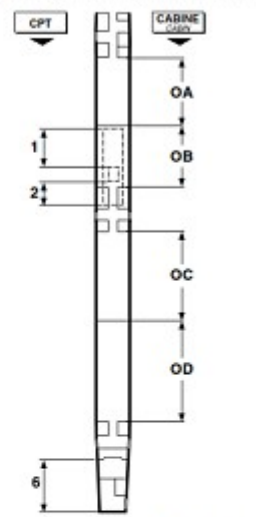
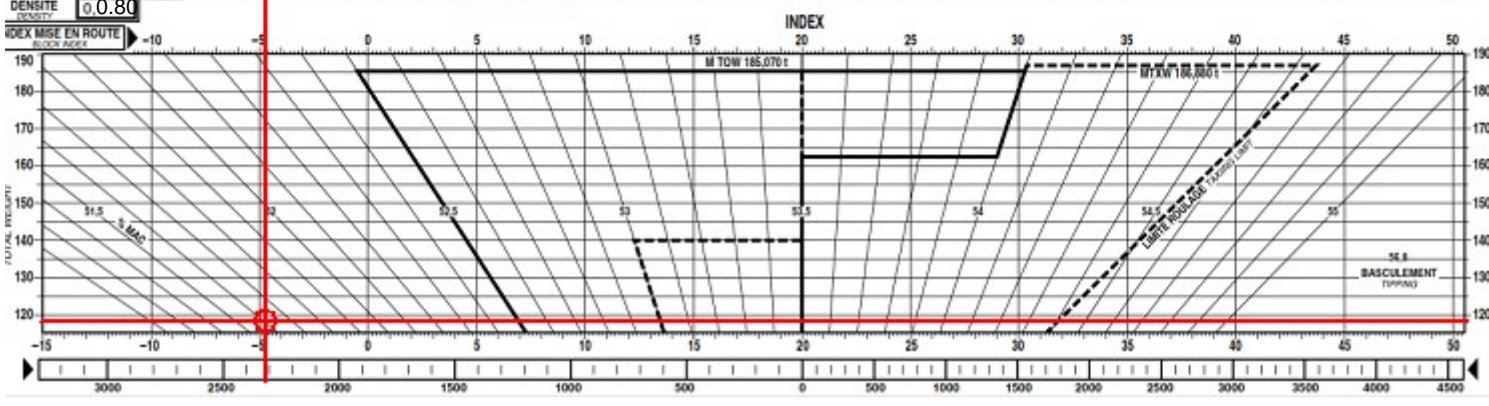
VOL N° : ALZ657 DATE : 04/01/201
 IMMATRICULATION : EC-202 S-22 KDFWMMM
 AC REGISTRATION : ETYPE : LES

CHARGE TRANSPORTEE (PAYLOAD)		MASSE DE BASE (D.O.W.)	+ CORRECTION EVENTUELLE (CORRECTION)	= MASSE DE BASE CORRIGEE (CORRECTED D.O.W.)
CPT 1	310	79210	0	79210
CPT 2	182	INDEX DE BASE (D.O.I.)	+ CORRECTION EVENTUELLE (CORRECTION)	= INDEX DE BASE CORRIGE (CORRECTED D.O.I.)
CPT 6	708	25	0	25
OA	16			
OB	16			
OC	22			
OD	26			

MASSE (t) (WEIGHT)	87130
ANS CARBURANT (ZERO FUEL)	
CARBURANT MISE EN ROUTE (BLOCK FUEL)	31480
MISE EN ROUTE (BLOCK)	418610
CENTRAGE (% MAC) (BALANCE)	
ANS CARBURANT (ZERO FUEL)	52.37 %
MISE EN ROUTE (BLOCK)	51.62 %



INDEX CARBURANT (+) (BLOCK FUEL)	-13.8
DENSITE (DENSITY)	0.80
INDEX MISE EN ROUTE (BLOCK ASSE)	-10





DÉCOLLAGE

P7 40.7		FF 20.8	
123	40.1	123	20.4

AÉROPORT KDFW	VOL-DATE ALZ657	AVION EC-202	PISTE 17C	ÉTAT DRY
Z SEUIL 562	QNH 30.42 1030	ALTI. PRESS. 98	VENT 010 °06 KT	COMP (T) 6
TEMP 07	TRANS	Z SÉCU 2916	ATIS	

V₁ 132

V_R 139

V₂ 174

LIM P9	FUEL BLOC 31480	MASSE ÉQUIVALENTE 126462
MTOW : 179.1		ZFW 87130
V1 Max : 161		ZFCG 52.37 %
Vr Max : 189		BLOC W 118610
V2 Max : 210		BLOC CG 51.62 %
A3 Min : 13.6		T/O W 117610
		T/O CG 53.5

A3 18.0	VZ3 2686 ft/min
VZRC3 152	TR VZRC3 TS 159
ΔT /	REP MAN N2 /

RHT 3	RLD 164 184 169 214	98.0 / 103.0 < N2 < 104.6
		EGT 794 °

ZAC CHEMINEMENT OESID
2916
AT 'PK' 233 ENTER HLDG (354 INBD,LT)

52 ⁵	52 ⁷	53	53 ²	53 ⁵	54	CG% TRIM A PIQUER
0 ⁵	1	1 ⁵	2	2 ⁵	2 ⁵	



ATTERRISSAGE

VLA

148

VTT

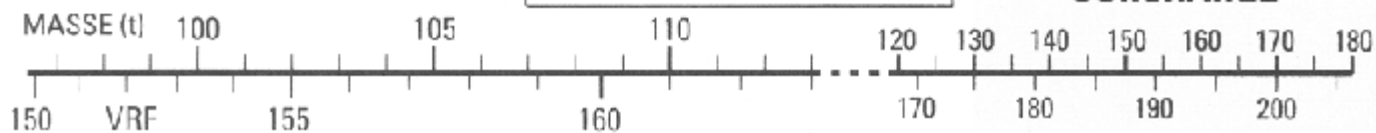
155

AÉROPORT MMMX	VOL-DATE ALZ657	AVION EC-202	PISTE 23L	ÉTAT DRY
Z SEUIL 7295	QNH 30.25	ALTI. PRESS. 6852	VENT 140 °/12 KT(T) 0	COMP
TEMP 19	TRANS	Z SÉCU See Airport Chart	VTT MAX 158	

MÉTÉO MMMX 032346Z 14012KT 10SM FEW030 19/04 A3025 NOSIG RMK SLP095 52011 908 8/100	Z FW 87130
	CARBU DISPO 6937
	MASSE ATT 94067
	NOTES LDG MODE : Auto
Landing Length Margin : 4337	CARB MINI DEGT..... 3747
	CARB ATT 3190
	TEMPS ATT 00:16

PROCÉDURE REMISE DE GAZ

SURCHARGE



All Weight in Kilograms (Kg)	Departure	KDFW	Destination	MMM	Flight Mode (Supersonic)			
	FUEL	TIME	CORR	ZFW	TOGWT	LDGWT	AVG V/C	
DESTINATION	18612	01:47	87130	117610	94067	0	
ALTN	MMTO	3747	00:09	MAX ZFWMAX TOGWTMAX		LDGWT		
HOLD	3190	00:16	92080	185070	111130		
CONT	931	00:03					
REQD	26480	02:17	PAX	80			
EXTRA	4000	00:26	OA	OB	OC	OD	
TAXI	1000	00:10	16	16	22	26	
TTL	31480	02:53	FRET	1200	PAYLOAD		7920
FUEL BIAS	100 %				CPT1	CPT2	CPT6	
Lengths in Feet				310	182	708		

BALST	0	IN TANK :	
TRANSF	T9 to T11 Transfer	2305	ZFCG 52.37 %

TAKE-OFF THRUST PARAMETERS

QFU	17C	TORA	13400	ASDA	13400	MAX STRUCTURAL	185070
ZAC	2916	OFFICIAL SID'S	3 RHT T/O THRUST				
WIND	(T) 6	QNH	1030	TEMP	07	DRY RWY	CG 53.5 % A/I OFF

PLANNED T/O WEIGHT 117.6

V1	132
VR	139
V2	174
A3	18.0

REMARKS :
 WX Source : AS
 Departure Subsonic step: FL260 - Distance : 320 NM
 Arrival Subsonic step: FL350 - Distance : 210 NM

TO TRIM	- 2.5°	RLD	164 /	169 /	184 /	214
ANTI NOISE PARAMETERS	DT1	s	MAN /	N2 /		
ENGINE PARAMETERS	P7	40.7	40.1			
	FF	20.8	20.4			
	EGT	794 °				
	N2	98.0 /	103.0 <	104.6		

DAY LIMITATIONS	179.1	Brakes	13.6	161	189	210
------------------------	-------	--------	------	-----	-----	-----

TAKE OFF CONDITIONS VARIATION

QNH 1030 CG 53.5 % A/I OFF

TEMP	DRY RWY			DRY RWY			WET RWY			WET RWY		
	WIND	TAIL	6	WIND	TAIL	10	WIND	TAIL	6	WIND	TAIL	10
2	181.4	Brakes	13.5	176.7	Brakes	13.7	181.4	Brakes	13.5	176.7	Brakes	13.7
	162	192	212	159	186	207	162	192	212	158	186	207
07	179.1	Brakes	13.6	174.4	Brakes	13.8	179.1	Brakes	13.6	174.4	Brakes	13.8
	161	189	210	158	184	205	161	189	210	157	184	205
12	177.0	Brakes	13.6	172.2	Brakes	13.9	177.0	Brakes	13.6	172.2	Brakes	13.9
	160	187	207	157	181	202	159	187	207	156	181	202
QNH <	1030	-0.18	T/HPA	-0.19	T/HPA		-0.18	T/HPA		-0.19	T/HPA	
QNH >	1030	+0.18	T/HPA	+0.19	T/HPA		+0.18	T/HPA		+0.19	T/HPA	

LANDING LIMITATIONS	111130	LANDING AIRPORT	MMM	QFU	23L	LDA	12795
PLANNED LDG WEIGHT	94067	LANDING MODE	Auto	LDG DISTANCE NEEDED	8458		
		VREF	148				
		VTT	155				
		VTT MAX	158				

FLIGHT LOG

ICAO Freq	ID	ICAO	ID	Latitude Longitude	Dist	Notes
KDFW	0	TORNN	1	N 31*31.2 W 096*30.9	87 87	Load KDFW to MMMX1.1.AWC 802
TORNN	1	HOOTZ	2	N 31*19.4 W 096*26.4	12 99	790
HOOTZ	2	BILEE	3	N 31*09.9 W 096*22.9	10 109	780
BILEE	3	HOMRN	4	N 30*49.6 W 096*15.3	21 130	759
HOMRN	4	JUDDY	5	N 30*31.5 W 096*08.8	19 149	740
JUDDY	5	TNV	6	N 30*17.3 W 096*03.5	15 164	725
TNV	6	IAH	7	N 29*57.4 W 095*20.7	42 206	Load KDFW to MMMX1.2.AWC 683
IAH	7	HUB	8	N 29*39.3 W 095*16.6	18 224	665
HUB	8	DELVE	9	N 29*08.0 W 095*15.5	31 255	634
DELVE	9	ARGUS	1	N 24*39.6 W 096*12.9	273 528	361
ARGUS	1	SEDAS	2	N 23*05.0 W 096*42.3	98 626	263
SEDAS	2	SIDRA	3	N 22*12.0 W 096*58.5	55 681	208
SIDRA	3	DATUL	4	N 20*39.8 W 098*36.8	130 811	78
DATUL	4	MMMX	5	N 19*26.2 W 099*04.3	78 889	0